

Tithes & Offerings



THE PARISH OF
CHANDLER'S FORD

Common Mission Fund!

Were you aware that our **Common Mission Fund** contribution costs £12,500 per month?

This is our share of the costs of providing clergy and teaching the Gospel across the diocese. We support both our parish and others, including significant ministry to 36,000 children their families and staff, in over 100 Church of England Schools.

As a parish we rely on your individual and collective generosity to help meet these ministry costs.



Use the QR code straight to
our online giving page



Bank transfer to:
PCC of Chandler's Ford
40-52-40
00032466

giftaid it

Please Gift Aid every
donation if you are able, to
maximise your giving

“The Lord loves a cheerful giver”

Tithes & Offerings



THE PARISH OF
CHANDLER'S FORD

Costs – Salaries and Staff Expenses

Are you aware that staff salaries and expenses for clergy and staff on books for study and development, travel, phone calls and other general items, is over **£6,000 per month?**

As a parish we rely on your individual and collective generosity to help meet these costs.



PARISH OFFICE
Office Opening Hours
Monday to Friday: 9.00am - 1.00pm



Use the QR code straight to our online giving page

giftaid it

Bank transfer to:
PCC of Chandler's Ford
40-52-40
00032466



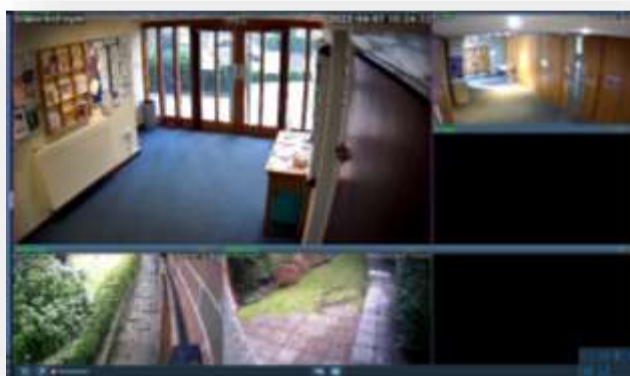
Please Gift Aid every donation if you are able, to maximise your giving

“The Lord loves a cheerful giver”

Running Costs

Are you aware that the cost of running the churches and their centres, including heating and lighting the buildings and general maintenance and repairs, is **£2,250 per month?**

As a parish we rely on your individual and collective generosity to help meet these costs.



Bank transfer to:
PCC of Chandler's Ford
40-52-40
00032466

Use the QR code straight to
our online giving page



giftaid it

Please Gift Aid every
donation if you are able, to
maximise your giving

“The Lord loves a cheerful giver”

Tithes & Offerings



THE PARISH OF CHANDLER'S FORD

Mission Giving

Are you aware that the parish commits to give 10% of budgeted income in donations to mission giving, relief agencies and secular charities, which amounts to approximately

£2,300 per month?



Use the QR code straight to our online giving page



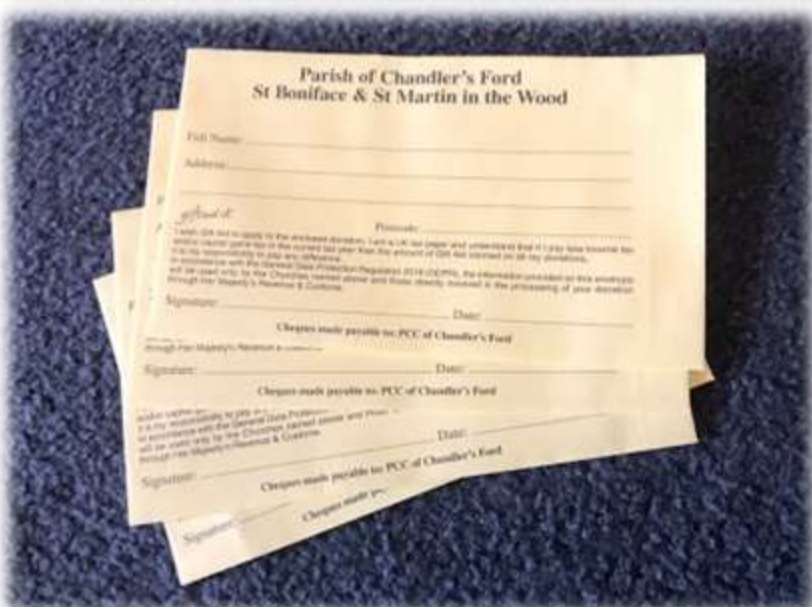
giftaid it

Please Gift Aid every donation if you are able, to maximise your giving

“The Lord loves a cheerful giver”

Income

Are you aware how we raise income to meet our expenditure? Our income, including HMRC recovered gift aid, from regular planned giving is just over **£17,000** per month, and from other collections and donations (including the annual Giving and Gift Day) approximately **£4,700** per month. This highlights the dependency on non-regular giving to balance the books. To be able to plan our expenditure better, we need more income from planned giving.



Use the QR code straight to
our online giving page

Bank transfer to:
PCC of Chandler's Ford
40-52-40
00032466



giftaid it

Please Gift Aid every
donation if you are able, to
maximise your giving

“The Lord loves a cheerful giver”

2022 Budget

What was our budget for 2022?

This year we expect to spend around £298,000 on:

- £27,500 - 10% tithe on our income to support local and global charities.
- £150k - the Common Mission Fund – the cost of our clergy and teaching the Gospel, in this parish and across the diocese.
- £58k - carrying out the mission of the Church in our community through events, activities and our children's and youth work.
- £10k - worship in many forms in our buildings and outside.
- £49.5k - running our buildings and administering the parish.

This adds up to just over £800 each day of the year

BUT ... UNEXPECTED EXPENSE!

- The heating at St Boniface needed repairing.
- Two trees in St Boniface car park had to be felled before they fell on somebody.

These were extra costs we didn't plan for so they were on top of the planned budget spend.



Use the QR code straight to
our online giving page

Bank transfer to:
PCC of Chandler's Ford
40-52-40
00032466



giftaid it

Please Gift Aid every
donation if you are able, to
maximise your giving

“The Lord loves a cheerful giver”